

Pipe Repair, Restoration & Sealing



MITI restores the structural and hydraulic integrity of piping systems by using a reinforced 100% solids epoxy liner without digging or by-pass pumping. Repairs include:

- sealing leaky and offset pipe joints
- sealing longitudinal or shear cracks in pipe
- retrofitting collapsed or damaged sections of pipe
- eliminating root intrusion into pipe joints

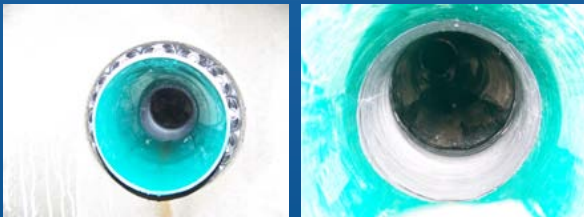
Water leaking through cracks and joints in sewer systems very often reduces the system's capacity, increases pump wear and treatment costs. Most of these leaks can be eliminated quickly, safely and cost effectively.



BEFORE



AFTER



www.maritimeinfrastructure.ca



CONTACT US

Would you like to learn more about
Maritime Infrastructure Technologies?

Please feel free to contact us.

Mailing Address

P.O. Box 1315 | Bathurst, NB | E2A 4J1

Tel: 506-543-MITI (6484)

Fax: 506-546-3971

E-Mail

info@maritimeinfrastructure.ca

Trenchless

Sewer

Rehabilitation

Specialist

Chemical Grout Injection



Manholes can be a major source of inflow and infiltration problems.

MITI performs high pressure chemical grout injections to seal:

- manhole & lift station joints
- cracks, voids and lift holes in manholes & lift stations
- cracks in manhole benching & lift station bases
- around inlet and outlet piping

We understand the costs associated with having a faulty sewer piping system and we offer a unique solution that is cost effective and will last for as long as the pipe does. That is our commitment to you.



BEFORE



AFTER



CCTV Inspection (Closed Circuit Video)



MITI offers a self-propelled, high resolution, color Video Inspection Camera for inspecting residential, commercial, industrial and municipal piping systems.

This unit will operate in pipes as small as 75mm in diameter and is portable, facilitating video inspections in remote or hard to access locations, (i.e. soft ground, tight easements, basements, etc.)

Our Process & Products



- Provide a **cost effective** and **economical** solution to restoring and rehabilitating sewer piping systems.
- **Increase** the **capacity** of the collection and treatment system by reducing inflow and infiltration.
- **Restore** the structural and hydraulic **integrity** of sewer systems.
- Can be installed **without interrupting** flow and without by-pass pumping.
- Virtually **eliminates noise, dust and disruptions** to traffic and utilities in residential, business and high traffic areas.
- **Drastically reduce** or eliminate **restoration cost**.
- **Save Money**

More Installations



More Services

Vacuum Truck Services
Line Flushing
Hydro Excavations
Mobile Pressure Wash

Septic Tank Cleaning
Sludge Disposal
Water/Oil Separation
Portable Toilet Rentals

Clovis Vacuum Trucks
(506) 548-2566